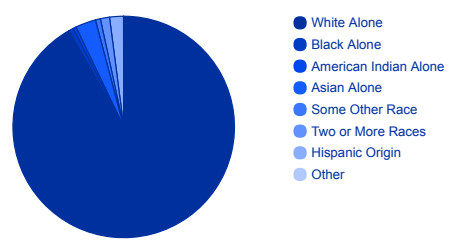
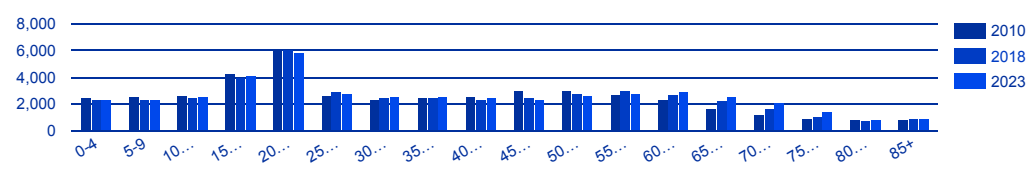
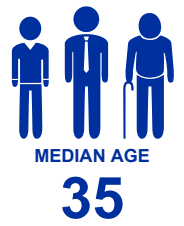
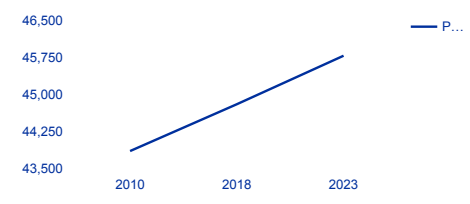
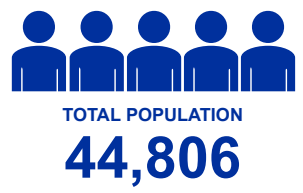




## Community Profile

### Dunn County

#### Population



#### Quality of Life

### Education

The county has many quality public schools and four parochial schools. Dunn County school district students score consistently well above the national norm on achievement and scholastic aptitude tests. Listed below are links to some of the fine schools in Dunn County:

- [Boyceville](#)
- [Menomonie](#)

### Health Care

**Cedar Medical Center (RCMC)** part of Mayo Health System, provides high quality health care for the entire county. It combines a 25-bed critical access hospital with a multi-specialty hospital-based clinic. RCMC provides primary care and diagnostic services at both satellite clinics in Elmwood and Glenwood City. RCMC provides outpatient primary and specialty care as well as inpatient and outpatient surgery, acute, critical care, obstetrics and swing bed hospital care, urgent care, behavioral health, telephone triage, pharmacy, rehabilitative services and emergency care in Menomonie. To find more detailed hospital data, click [here](#).

**Marshfield Clinic** offers patient-centered, cost-effective and technologically advanced health care in Dunn County and throughout the Chippewa Valley. The MENOMONIE CENTER is conveniently located just off Hwy 29 in the Stout Technology Park. A staff of full time physicians and consulting specialists offers comprehensive family medicine and seamless access to

specialty care. Same day appointments are usually available.

There are several nursing homes and residential care centers in the county, and many fine optometrists, dentists, and chiropractors.

## Recreation

Recreational Highlights			
Water Acres as % of Land Area	1.2	Bicycle Trail (miles)	35
Swimming Areas	4	Snowmobile Trails (miles)	230
Fishing Lakes/Rivers	5	Cross-Country Ski Trails (miles)	24
Trout Streams (miles)	160	Golf Courses	4
Canoe Trails (miles)	75	Parks and Picnic Areas	42
Boat Launches	26	Hunting Areas (public acres)	8700
Camping Sites	313	Shooting Ranges	3
Hiking & Nature Trails (miles)	35	<i>Source: Dunn County Outdoor Recreation Plan, 1996-2000</i>	

Dunn County has a variety of recreational resources ranging from hunting and fishing to golfing and picnicking. The County is characterized by rolling hills and numerous fishing streams. The Red Cedar River is known for its many fishing, canoeing, and camping opportunities. Trout fishing is also popular in Dunn County with the DNR continually stocking many of its streams, including Big Elk, Wilson, Muddy, Knight and Gilbert Creeks. A groomed and well-marked snowmobile route runs the length of the County. Hoffman Hills Park has recently been developed into a cross-country ski area. Of state significance is the Red Cedar Trail which runs parallel to the Red Cedar River from Menomonie to the Dunnville Wildlife Area.

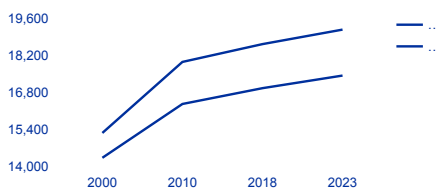
## Education

### Higher Education

The **University of Wisconsin-Stout** is located in Menomonie and is renowned for its technical and industrial expertise. Strengths of the University include: manufacturing engineering, packaging, graphic arts and design, hotel and restaurant management, computer science and applied mathematics, CAD/CAM programs, computer manufacturing simulation, etc.

The highly diversified **Chippewa Valley Technical College**, located in Menomonie, is part of an eleven county vocational district that offers 55 full-time career training programs, and is recognized for its ability to design and implement a variety of customized labor training programs. It has the resources of the entire Wisconsin vocational technical education system to draw upon.

## Housing & Income



**TOTAL HOUSING UNITS**  
**18,638**



**MEDIAN HOUSEHOLD INCOME**  
**0.50%**

**PER CAPITA INCOME**  
**2.38%**



MEDIAN HOME VALUE  
\$169,848

AVERAGE HOME VALUE  
\$199,570



**INCOME PROJECTION**

MEDIAN HOUSEHOLD  
\$53,340 → \$56,526

AVERAGE HOUSEHOLD  
\$65,093 → \$72,993

PER CAPITA  
\$25,248 → \$28,394

Workforce



TOTAL BUSINESSES  
**1,624**



TOTAL EMPLOYED  
**18,025**



WORKERS 16+  
**21,986**

AG/FORESTRY/FISH/HUNTING



BUSINESSES  
87  
EMPLOYED  
285

MINING



BUSINESSES  
5  
EMPLOYED  
516

UTILITIES



BUSINESSES  
6  
EMPLOYED  
71

CONSTRUCTION



BUSINESSES  
134  
EMPLOYED  
676

MANUFACTURING



BUSINESSES  
68  
EMPLOYED  
2,706

WHOLESALE TRADE



BUSINESSES  
57  
EMPLOYED  
1,190



SOME  
HIGH SCHOOL  
**1,180**

GRADUATED  
HIGH SCHOOL  
**8,342**

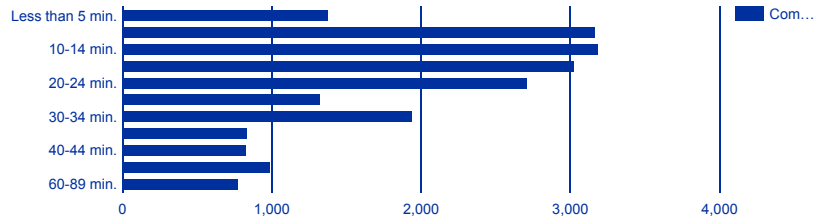
ASSOCIATES  
DEGREE  
**3,447**

BACHELOR'S  
DEGREE  
**4,667**

GRADUATE  
DEGREE  
**2,627**



AVERAGE  
COMMUTE TIME  
**23 min.**



RESIDENT COMMUTERS  
**14,363**



NON-RESIDENT COMMUTERS  
**6,808**



DRIVE ALONE  
**16,806**



CARPOOLED  
**1,947**



PUBLIC  
**26**



WORK AT HOME  
**1,298**

Transportation

# Transportation

Dunn County is directly on the interstate Highway 94 corridor, and is serviced by U.S. State Highways 12, 25 and 29. It has a network of county trunk highways providing over 1,000 miles of roadway.

- Dunn County has two airports ([Menomonie](#) and [Boyceville](#)), and is 20 minutes from the [Chippewa Valley Regional Airport](#). It is one hour from the [Minneapolis/St. Paul International Airport](#). The Menomonie Municipal airport is Transport/Corporate classified facility and has a new (2010) terminal building.
- The county is serviced by two railroads, the West Central Limited (CWL) and [Union Pacific](#), with rail access to many of its sites. Reciprocal switching is available, with only 25 miles to mainline switching.
- Numerous trade lines serve the county with overnight delivery available to the upper Midwest.
- [Greyhound](#) bus lines serve the county daily, with Door Stop Bus operation for the aged and differently abled.
- There is a 24 hour cab service operating in the county.

▾ Utilities

# Media & Communications

- Dunn County boasts four different papers and shoppers.
- [Radio stations](#) include AM/FM, [educational](#), as well as an [educational television station](#).
- [Cable TV](#) is available in Menomonie and the surrounding area, including cable modem high-speed-internet access.
- Internet and other digital network access is available through [local dial-up Internet Service Providers](#) and a variety of high-speed leased lines in most areas of the County.

Show Full Data

---

These materials are protected by copyright and trademark laws. The information contained herein is provided on an "as is" basis. The provider make no guarantees or representation about the accuracy or completeness of the information and disclaim all warranties – express or implied – including but not limited to warranties of merchantability, fitness for a particular purpose and non-infringement.

We are not responsible for any damages arising from the use of information on this site. It is your responsibility to independently investigate the information's accuracy and completeness, and to determine to you satisfaction the suitability of a property for your needs. Any projections, opinions, assumptions, or estimates used are for example only and do not represent the current or future performance of any property.